

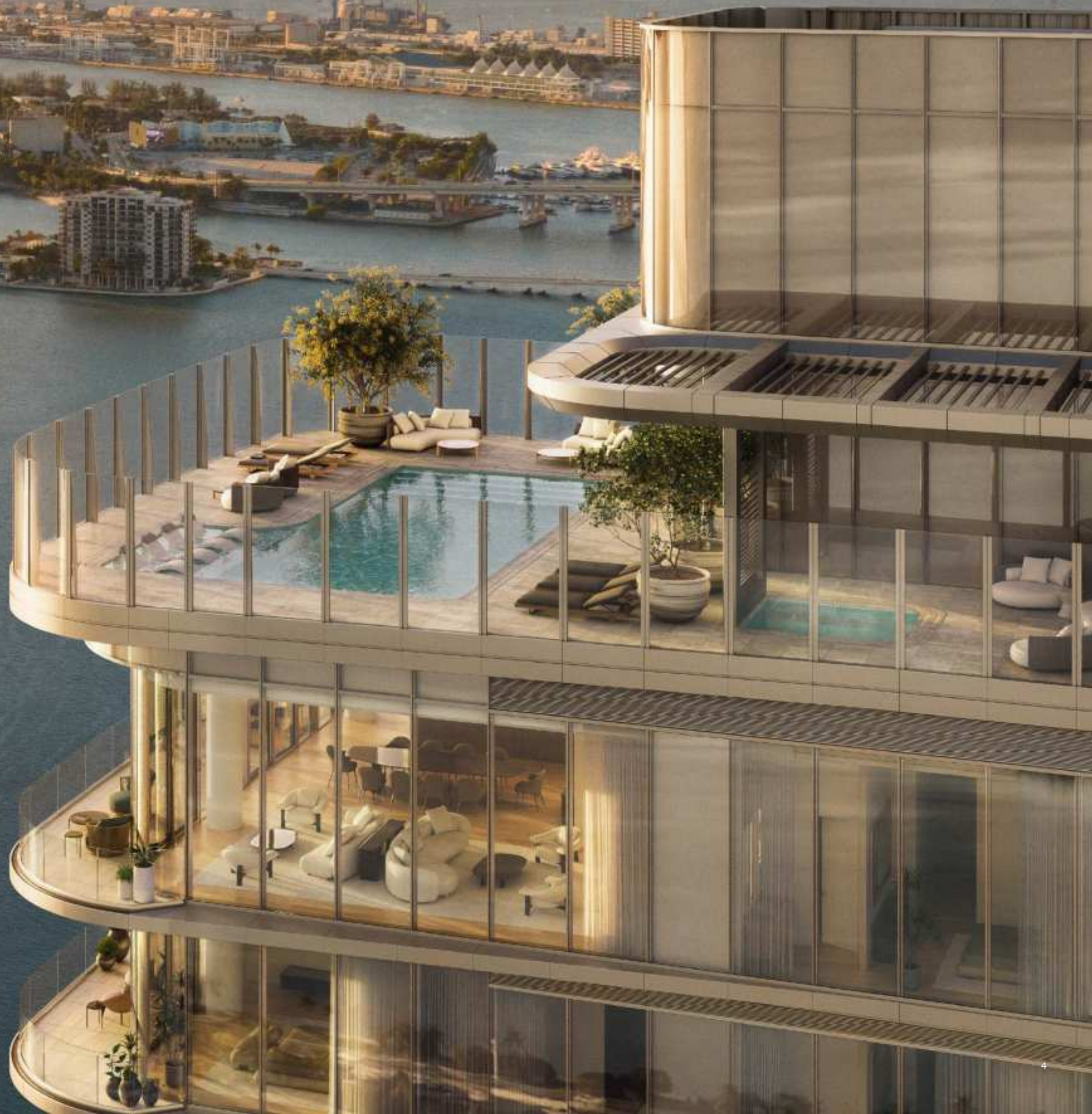


LILLI  
MIAMI EDGEWATER

01

Building

On the edge of Biscayne Bay,  
LILLI rises with quiet certainty



A sense of balance is reflected in LILLI's design by Adrian Smith + Gordon Gill Architecture, the firm behind UNA Residences and whose principal, Adrian Smith, designed the Burj Khalifa.

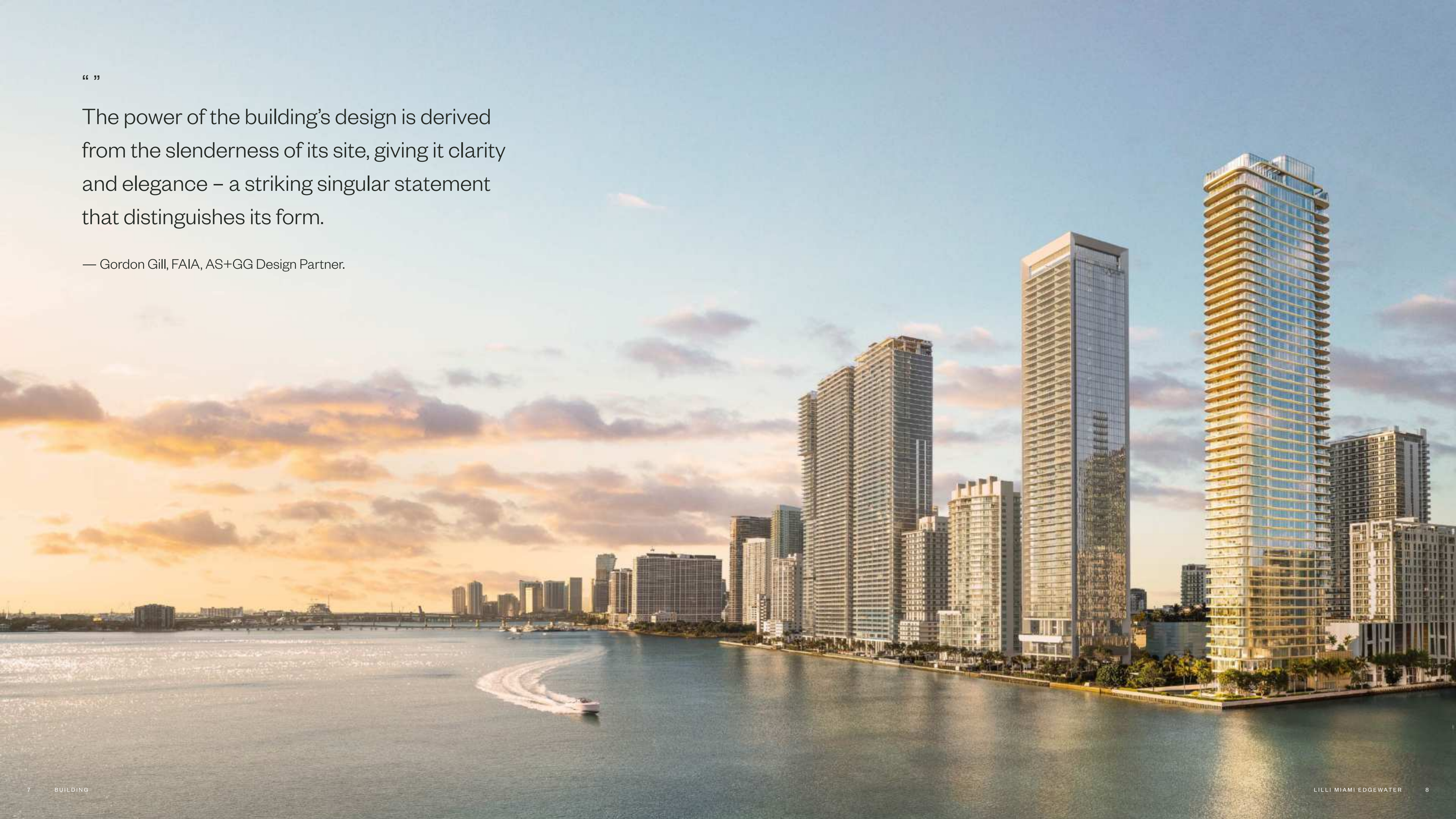
The residences bring together nature and architecture in a singular expression of elegance.



“ ”

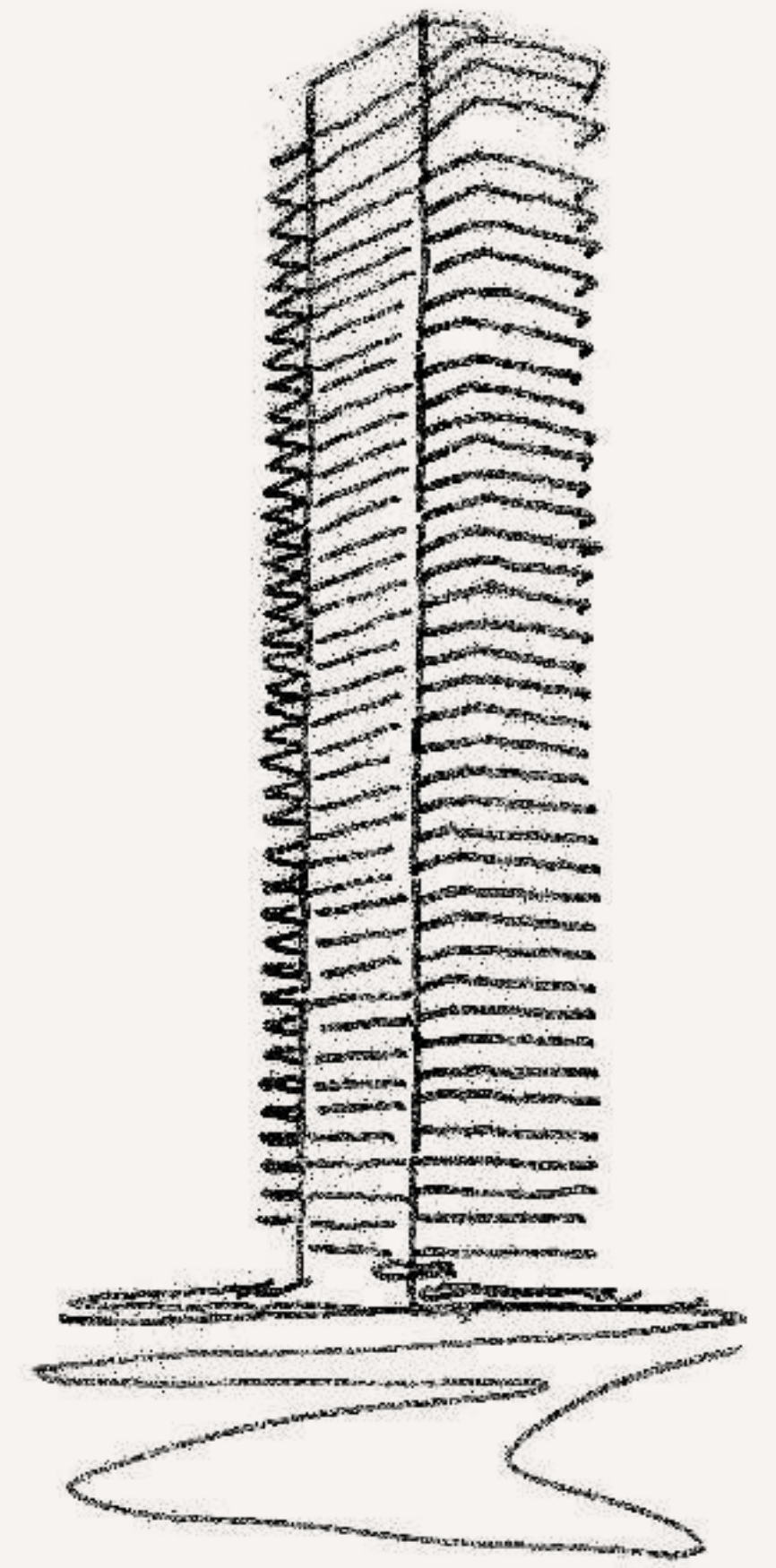
The power of the building's design is derived from the slenderness of its site, giving it clarity and elegance – a striking singular statement that distinguishes its form.

— Gordon Gill, FAIA, AS+GG Design Partner.





Located on the edge of Biscayne Bay in Miami's Edgewater neighborhood, LILLI is a boutique collection of 117 waterfront residences, offering one- to four-bedroom homes and penthouses.



Fluid and curvilinear in its appearance, LILLI's softly rounded corners and articulated balcony elements create a cadence of light and shadow across the facade.



Every view is deliberate, framing the bay, city, and ocean beyond.





## ARRIVAL

At the edge of Edgewater, a threshold shaped by the bay. Champagne-toned fluted metal accents with sculpted balconies and curvilinear glass. A covered canopy marking the quiet ceremony of arriving home.

## LOBBY

A lobby drawn toward the open water. Double-height windows frame the bay from every angle. Fluted columns clad with champagne metal detailing. Light that moves with the day.



02

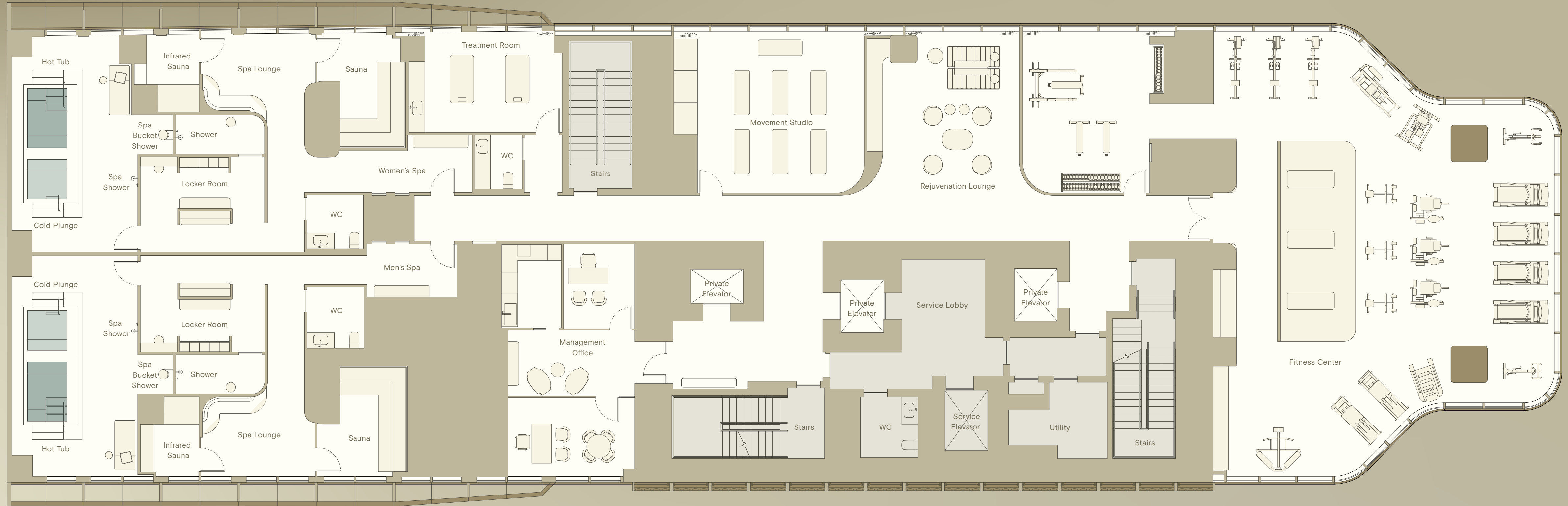
## Amenities



#### AMENITIES

At LILLI, a focus on health, wellness, and longevity is reflected in a curated amenity package organized around four Living Pillars: Movement, Recovery, Nourishment, and Connection.





## FITNESS CENTER

A fitness studio guided by circuit-based training, tailored to individual goals.

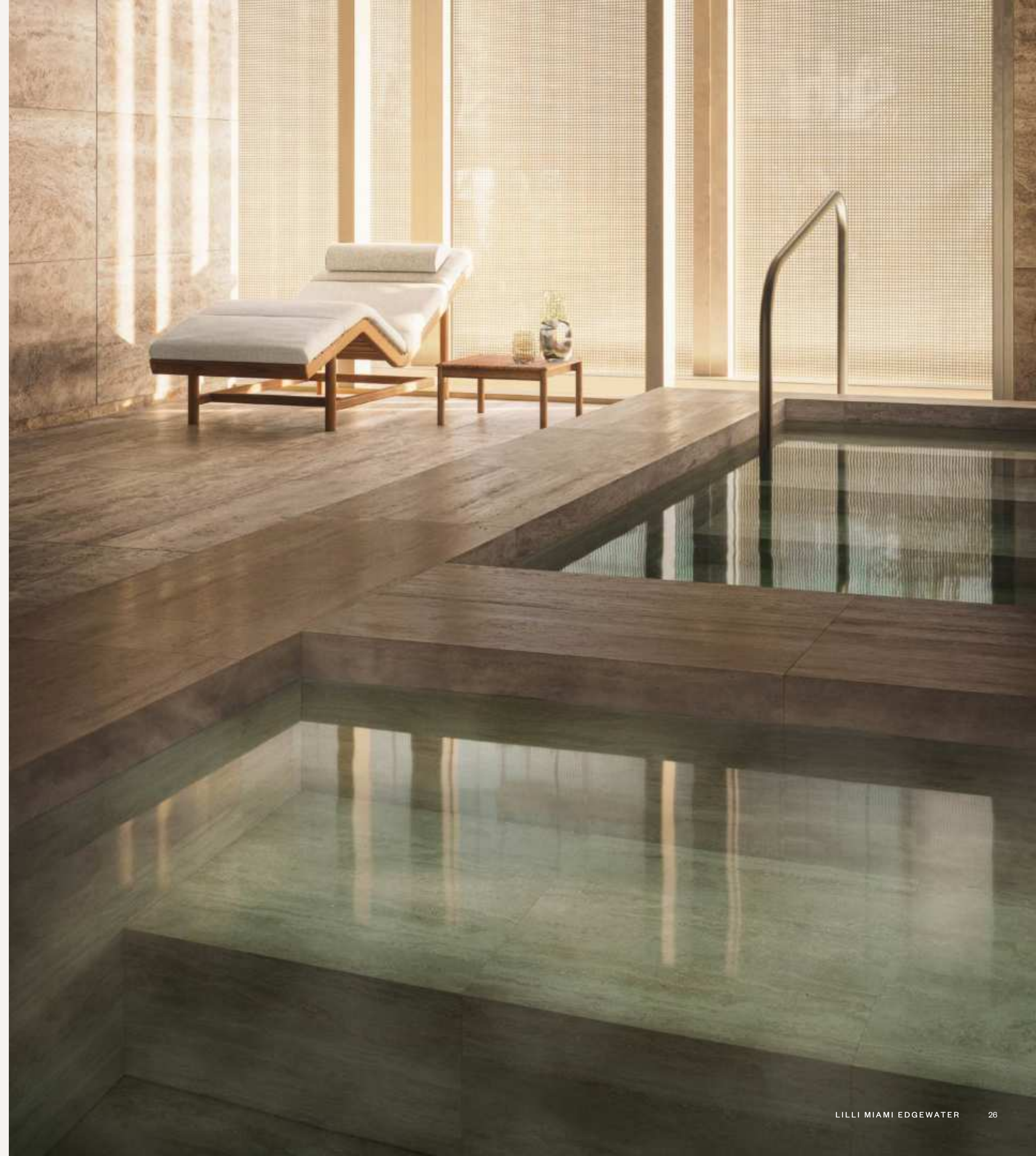


A spa with treatments calibrated to optimize and enhance resident's daily lives.



#### SPA & WELLNESS AMENITIES

An infrared sauna, a hot tub and cold plunge pool, a body composition analyzer, and recovery tools designed to compound benefits over time.





Rooftop  
Level 52





**ROOFTOP TERRACE**

A saltwater pool at the edge of the sky.  
A rooftop designed for living — sunrise rituals,  
open-air workshops, culinary experiences, and  
community programming across every season.

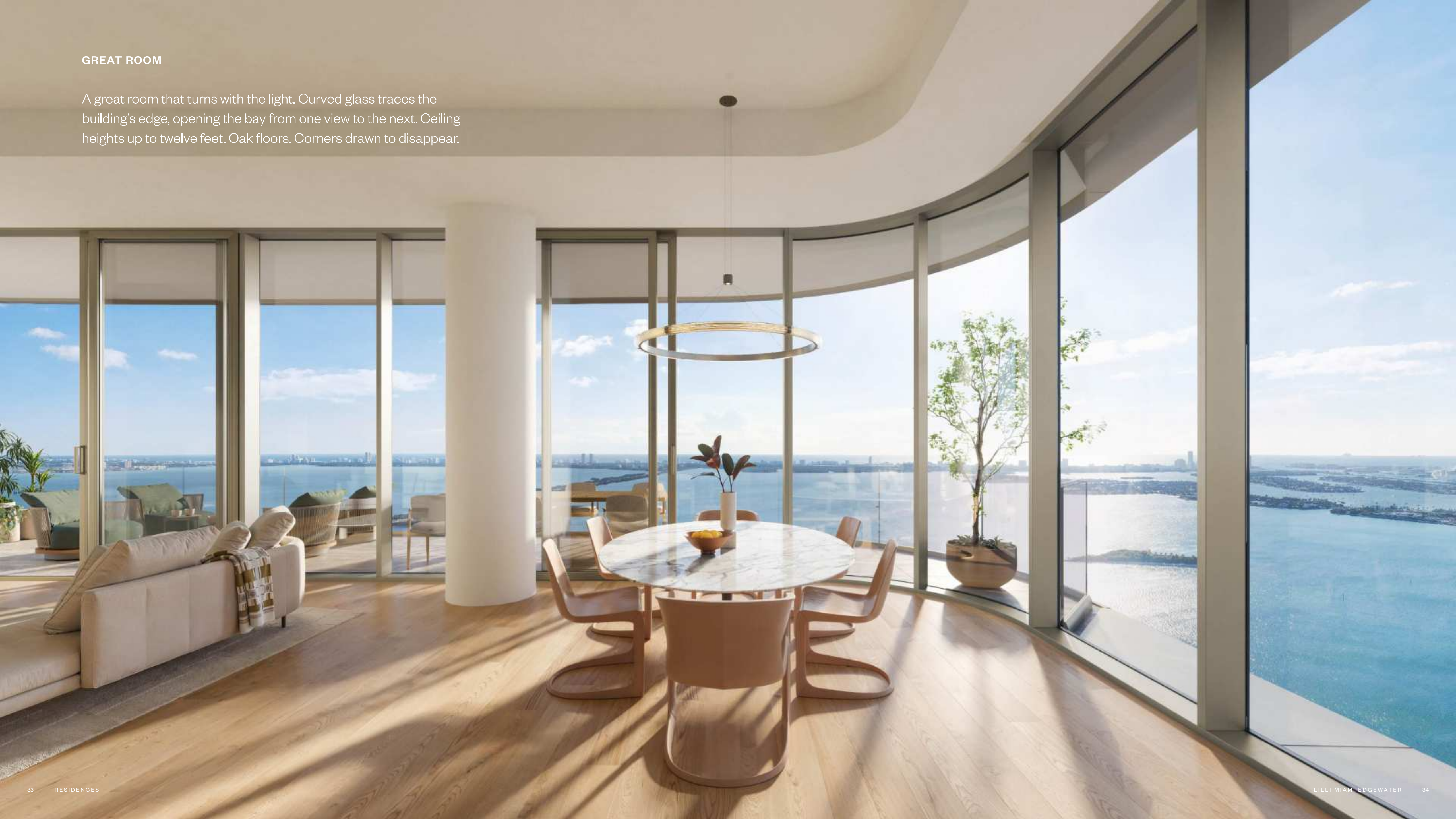
03

# Residences



## GREAT ROOM

A great room that turns with the light. Curved glass traces the building's edge, opening the bay from one view to the next. Ceiling heights up to twelve feet. Oak floors. Corners drawn to disappear.





**PRIMARY BEDROOM**

Awaken to tranquility with breathtaking, panoramic views through sweeping floor-to-ceiling glass that seamlessly connects your private sanctuary to the vibrant waterfront.



## PRIMARY BATHROOM

Natural stone, glass, oak — materials that evoke warmth and comfort. A freestanding soaking tub. A glass shower with rain and body spray fixtures.



## BALCONY

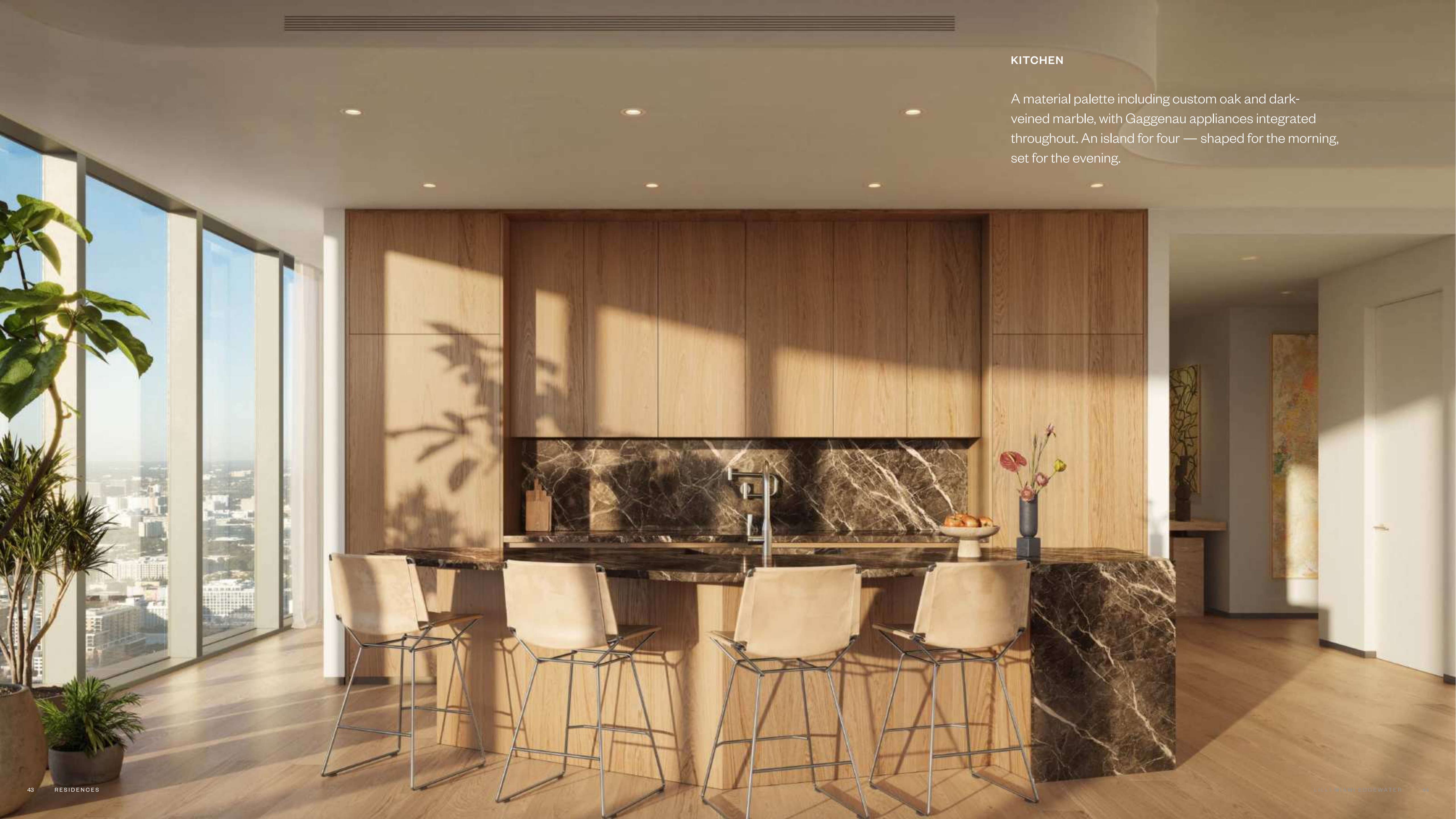
Suspended between sea and air. Private balconies up to 640 square feet, with glass handrails that recede into the view. Room for large group entertaining and private enough for quiet and contemplation.



## LIVING & DINING

Floor-to-ceiling glass wraps each residence in light, framing Miami from bay to skyline. Mornings arrive slowly. Evenings stretch wide. The city becomes a quiet companion.





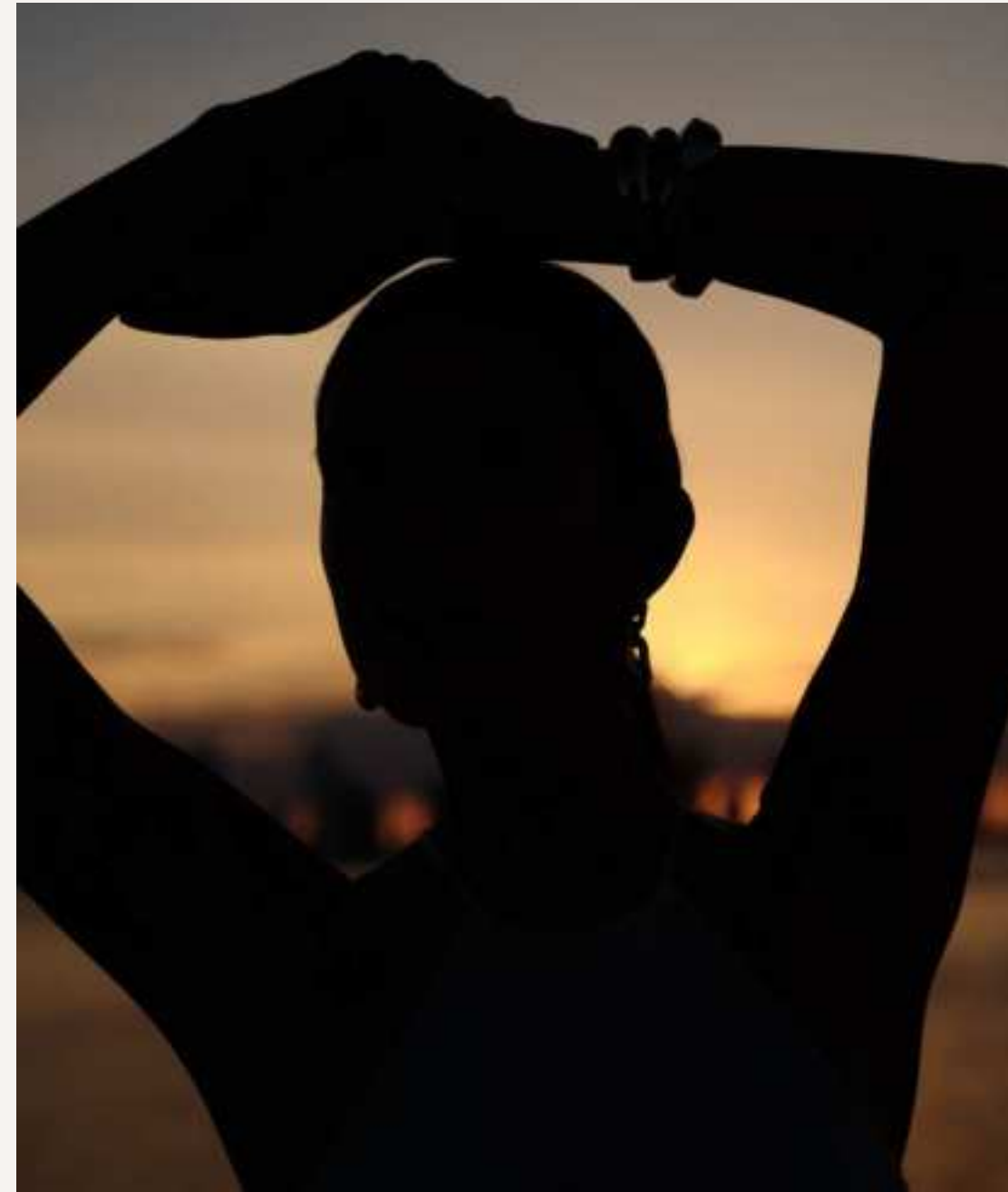
## KITCHEN

A material palette including custom oak and dark-veined marble, with Gaggenau appliances integrated throughout. An island for four — shaped for the morning, set for the evening.

04

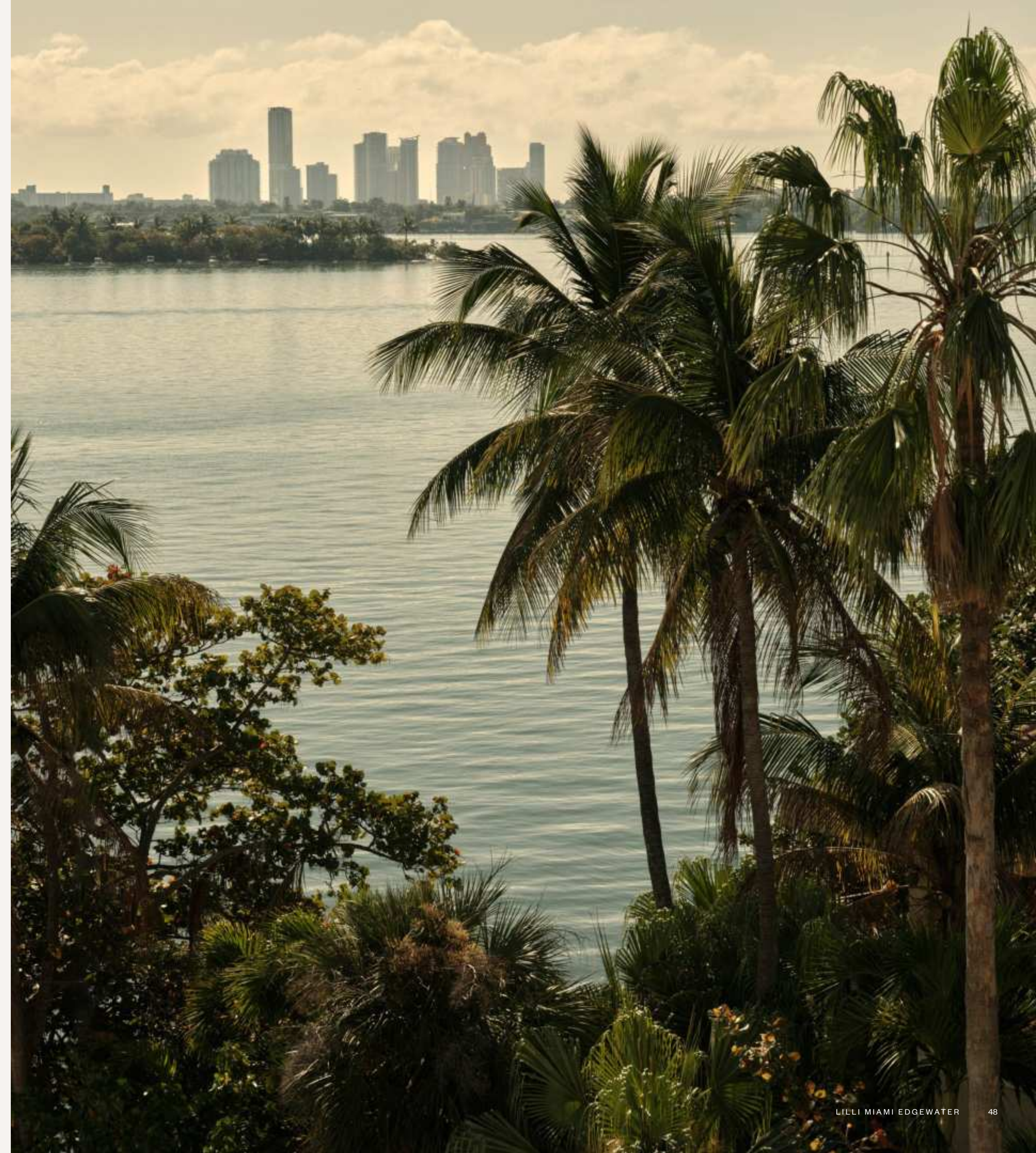
## Location

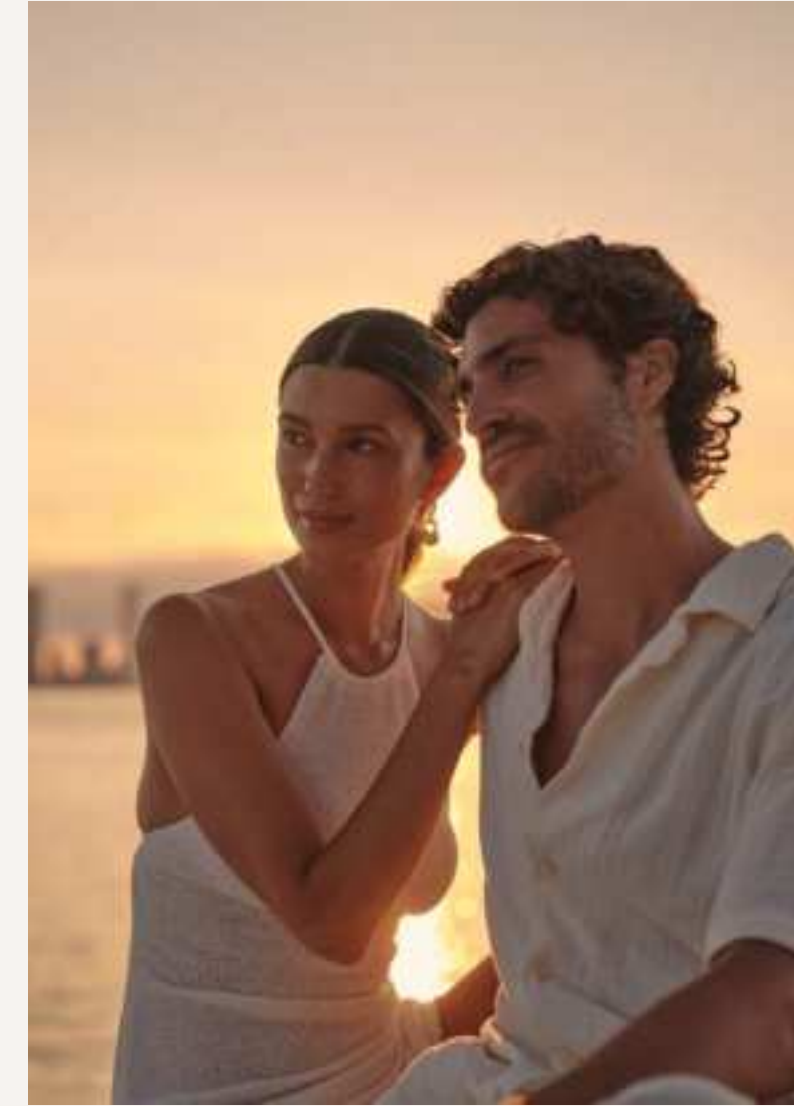
To live on the edge is  
to live with perspective.



#### THE NEIGHBORHOOD

Edgewater holds the shoreline between the bay and the city —  
Design District, Wynwood, and Midtown interconnected;  
Miami Beach across the water. Close to everything that matters.

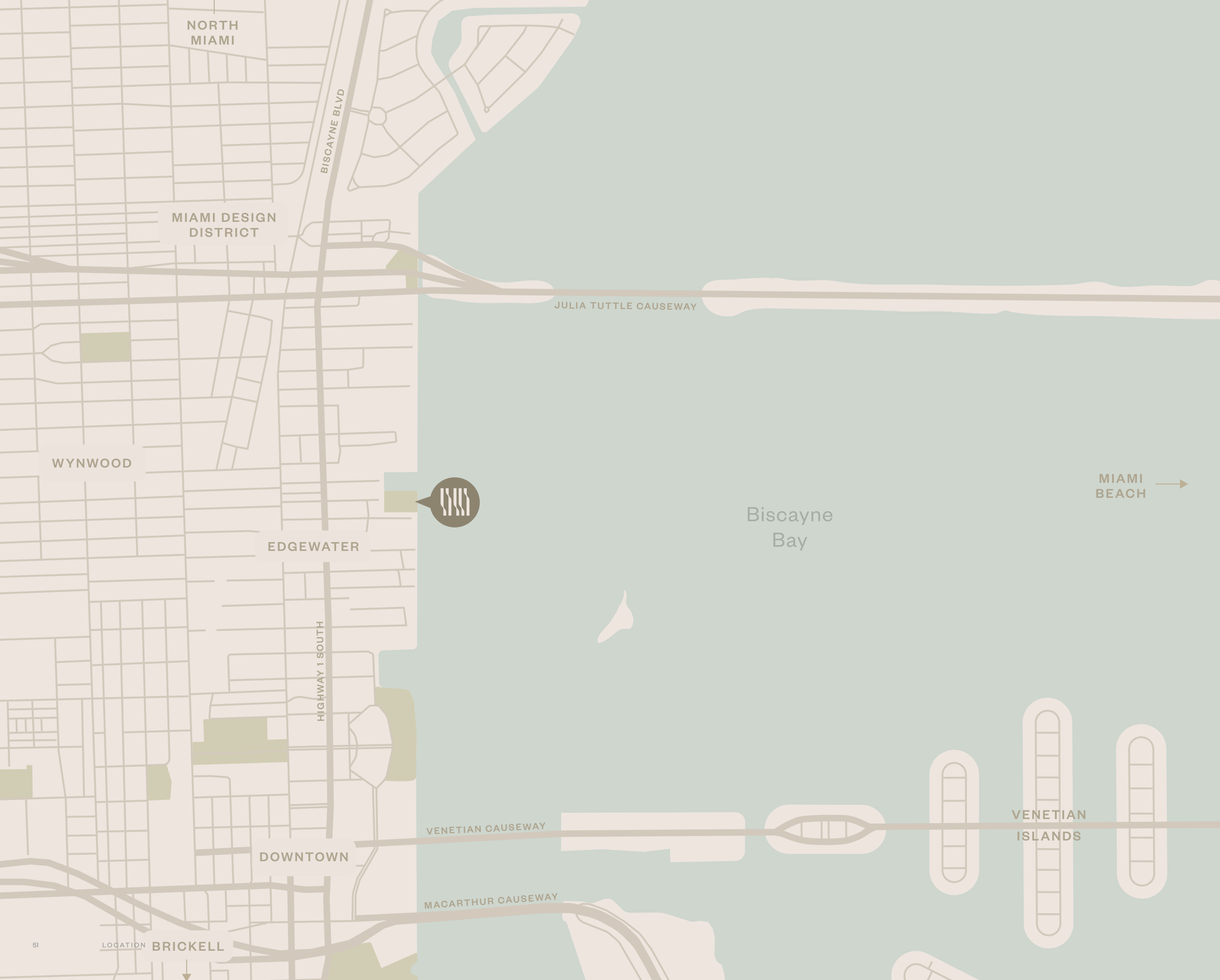




**THE EDGE OF CHANGE**

A neighborhood finding its form, met at the right moment.  
An enclave inside the city, close to everything, in a quiet corner all on its own.

An address few can claim.



Edgewater sits at the convergence of Miami's most consequential neighborhoods. The Design District and Wynwood are minutes away. Midtown and the Arsht Center, a short drive. Brickell and the airport to the south, Miami Beach across the causeway, the Venetian Islands in plain view.

## Project Team



AMAN NEW YORK

Developer: OKO Group

Design Architect & Interior Designer:  
Adrian Smith + Gordon Gill Architecture

Architect of Record: ODP Architects

Landscape Architect: SWA Group



CENTRAL PARK TOWER

### DEVELOPER / OKO GROUP

OKO Group is a U.S.-based real-estate development firm founded in 2015 by Chairman and CEO Vlad Doronin. With a growing portfolio of landmark residential and commercial projects in the United States and internationally, signature developments include 830 Brickell, a Class A+ office tower in Miami's Brickell Financial District, and a luxury residential project, Una Residences, in Brickell. The firm also develops hotels and branded residences for Aman Group, where Doronin serves as owner, CEO, and Chairman. These include urban destinations such as Aman Miami Beach, Aman New York in the historic Crown Building, and Aman Beverly Hills within the 17.5-acre One Beverly Hills master plan, as well as resort properties including Aman Maldives, Amancaya in the Exuma Islands, Bahamas, and Janu Turks & Caicos.

### DESIGN ARCHITECT & INTERIOR DESIGNER / ADRIAN SMITH + GORDON GILL ARCHITECTURE

Adrian Smith + Gordon Gill Architecture (AS+GG) is dedicated to the design of high-performance and sustainable architecture on an international scale. The firm approaches each project, regardless of size or scale, with an understanding that architecture has a unique power to influence civic life. We strive to create designs that aid society, advance modern technology, sustain the environment, and inspire those around us to improve our world.

This project is being developed by 720 NE Street PropCo LLC, a Delaware limited liability company (the "Developer"). Any and all names, images and/or representations shall be deemed made by Developer and not by OKO Group LLD ("OKO"), and you agree to look solely to Developer (not to OKO and/or any of their affiliates) with respect to any and all matters relating to the sales and marketing and/or development of the project.

ORAL REPRESENTATIONS CANNOT BE RELIED UPON AS CORRECTLY STATING THE REPRESENTATIONS OF THE DEVELOPER. FOR CORRECT REPRESENTATIONS, MAKE REFERENCE TO THE PROSPECTUS (OFFERING CIRCULAR) FOR THE CONDOMINIUM AND TO THE DOCUMENTS REQUIRED BY SECTION 718.503, FLORIDA STATUTES, TO BE FURNISHED BY THE DEVELOPER TO A BUYER OR LESSEE.

These materials are not intended to be an offer to sell, or solicitation to buy a unit in the condominium. Such an offering shall only be made pursuant to the prospectus (offering circular) for the condominium and no statements should be relied upon unless made in the prospectus or in the applicable purchase agreement. In no event shall any solicitation, offer or sale of a unit in the condominium be made in, or to residents of, any state or country in which such activity would be unlawful.

All images and designs depicted herein are artist's conceptual renderings, which are based upon preliminary development plans, and are subject to change without notice. No guarantee is provided in the offering documents. All such materials are not to scale and may show other buildings, properties or features and amenities depicted herein are based upon preliminary development plans and are subject to change without notice in the manner provided in the offering documents. No guarantee is made that any plans, features, amenities or facilities will be provided or, if provided, will be of the same type, size, location or nature as depicted or described herein. Additional fees may apply. Renderings depict proposed views, which are not identical from each unit. No guarantees or representations whatsoever are made that existing or future views of the project and surrounding areas depicted by artist's conceptual renderings or otherwise described herein, will be provided or, if provided, will be so depicted or described herein. Any view from a unit or from other portions of the property may in the future be limited or eliminated by future development or forces of nature and the Developer in no manner guarantees the continuing existence of any view. The sketches, renderings, graphics, materials, plans, specifications, amenities, terms, conditions and statements contained in this brochure are proposed only and the Developer reserves the right to modify, revise or withdraw any or all of the same in its sole discretion and without notice. The development plans and construction are subject to first obtaining the appropriate federal, state and local permits and approvals. These drawings and depictions are presented only and are for the convenience of reference. They should not be relied upon as representations, express or implied, of the final detail of the residences. The Developer expressly reserved the right to make modifications, revisions and changes it deems desirable in its sole and absolute discretion.

The photographs contained in this brochure may be stock photography or have been taken off-site and are used to depict the spirit of the lifestyle to be achieved rather than any that may exist or that may be proposed, and are merely intended as illustration of the activities and concepts depicted therein. The project graphics, renderings and text provided herein are copyrighted works owned by the Developer. All rights reserved. Unauthorized reproduction, display or other dissemination of such materials is strictly prohibited and constitutes copyright infringement. No real estate broker is authorized to make any representations or other statements regarding the projects, and no agreements with, deposits paid to or other arrangements made with any real estate broker are or shall be binding on the Developer.